

## Remove Heatsink

The motherboard or video card should be removed from the chassis in order to install the chipset cooler. The mounting screws are inserted from the back side of the board.

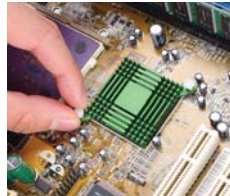
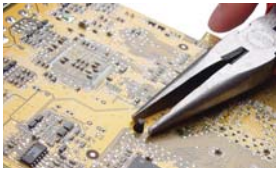


**CAUTION:** Removal of the original heat sink may void your manufacturer's hardware warranty. Please consult the manufacturer if unsure, and keep all original parts in case of a return/RMA. Koolance does not recommend using a liquid cooler on motherboards or video cards that lack standard mounting holes, or have heat sinks that are attached with only an adhesive (rather than screws or bolts).

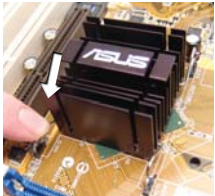
### Screw-Mounted



Beneath the motherboard/video card, the plastic tabs must be squeezed together with needle-nose pliers in order to free the original heat sink. (Some tabs have locking center pins which must first be removed from the top.)

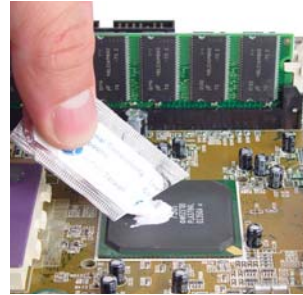


### Retention Spring (Motherboards)



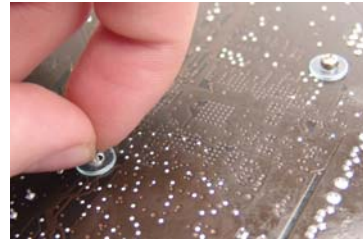
Remove the retention springs from the heatsink by applying pressure with your finger until the spring may be unclipped.

## **2** Apply Thermal Paste



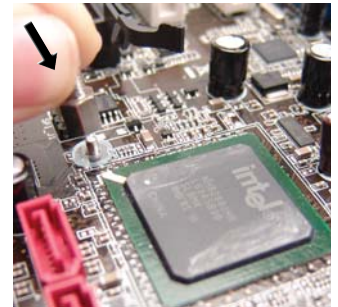
Once loosened, remove the original heat sink. Apply a thin layer of thermal interface compound onto the chipset if necessary.

### Attach Mount Screws (If Applicable)



Through the original mounting holes, insert both metal mounting screws from the back of the board. Make sure the plastic insulating washers are placed on each screw.

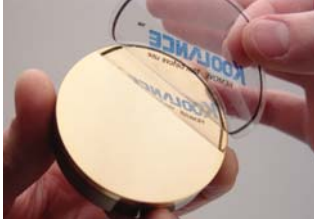
Also place plastic insulating washers on each screw on the front side of the motherboard or video card. Tighten both mounting screw posts to each screw by hand. These will be used to secure the cooler.



3

### Install Cooler

Remove the protective film from the cooling block.



Place the cooler on your chipset.

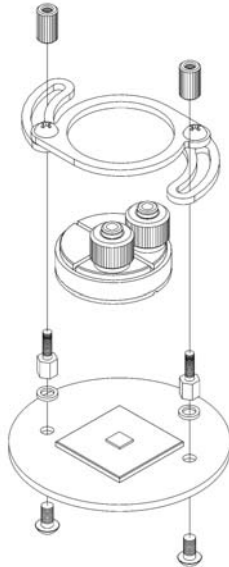
### Screw-Mounted



If you have a screw mount, set the bracket on the cooler. Be sure to fit the bracket arms over the mounting post screws.



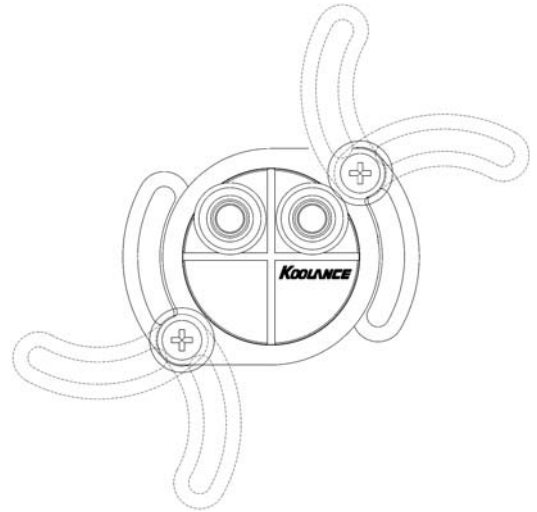
Tighten thumb nuts to mounting post screws by hand. The cooler should now be secure.



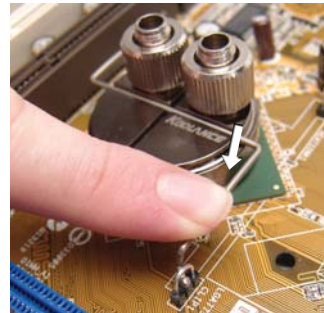
4

The bracket included is designed to fit a range of mounting post spaces.

43.2 mm - 93.7 mm  
1.70" - 3.69"



### Retention Spring



If you have retention springs, use the appropriate length of retention spring included to secure the cooler.