

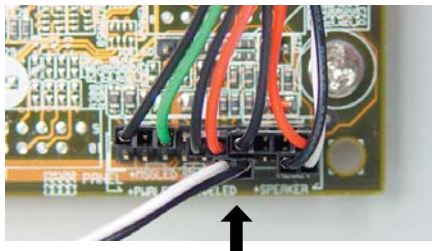
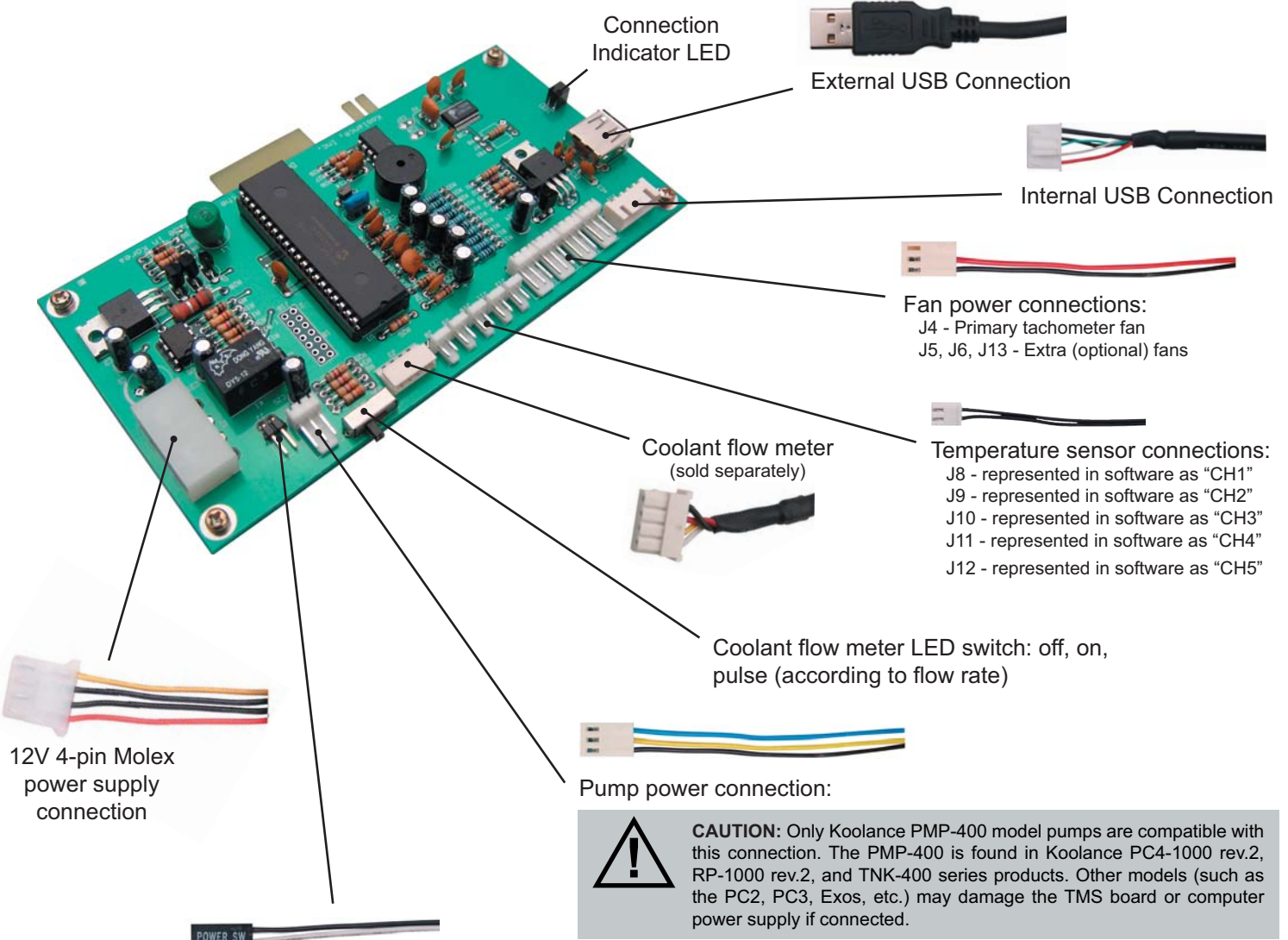
1 Koolance TMS-100K Installation Guide v1.00

Hardware Installation

The TMS interface card can be installed into a PCI or PCI-Express slot (with included L-bracket), 3.5" bay (with included tray), or optionally adapted to a 5.25" bay. It utilizes one external or internal USB port, and is powered by a direct 12V power supply connection.

First, connect all necessary wires to the TMS card **EXCEPT THE USB CABLE**. The internal or external USB cable will be connected after software installation. If necessary, wire extensions for fans and the pump are included with the TMS-100K.

Decide whether the TMS card will use the L-bracket (motherboard slot installation) or 3.5" tray (drive bay installation) and mount the appropriate piece with the included screws. The cables will be more difficult to attach if not done before screwing the TMS card into the 3.5" tray.



Connect the other female ATX power lead to the motherboard's power switch connection (often marked "PWRSW", "PWSW", or "PWBT").

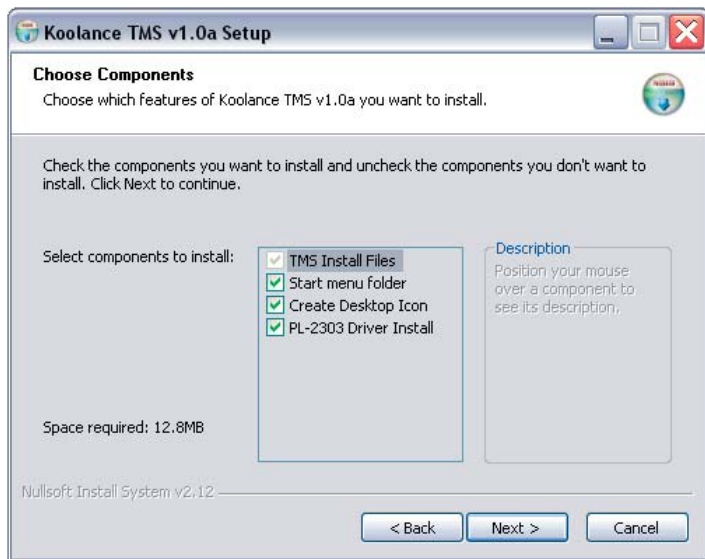
This is the connection that would normally receive the chassis power switch lead directly.



2 Koolance TMS-100K Installation Guide v1.00

Software Installation

After connecting the TMS board (except the USB cable) and mounting the card within the computer case, insert the CD-ROM to launch the installation program.



Select the features you would like to install. The PL-2303 Drivers will be necessary for the TMS software to communicate with the hardware card.

NOTE: If you are using Windows XP **64-bit** version, skip the PL-2303 Drivers installation here. The necessary ".INF" files are located on the TMS CD-ROM under "/xp64/".

Once all software and drivers have been installed, launch the TMS program. There will be no activity yet, and "Port Open error!" will display in the message bar.

Port Open error!

Now connect one USB cable to the TMS board. Either loop the external cable back to an available external port, or plug the internal cable from the TMS board to the motherboard's internal USB header (if available).



CAUTION: If using the internal cable, be sure the motherboard's USB pinout is compatible with the TMS cable. Some motherboards may not take this particular type of wire layout. Also be sure **NOT** to connect the TMS cable to a 1394 Firewire header, or hardware damage may result.

After a few seconds, the TMS program should find the available USB port. All available options in TMS will then be active.

COM Port: 3

If there are any alarms immediately sounding in TMS, the program will need some configuration (for example, the pump "disabled" if a PMP-400 is not connected).

To learn how to operate the program, please see the help (?) button in TMS.